

# PRODUCTS GUIDE

**TERAL**



# Listen to the voice of the times and regard the global environment from a deeper and broader viewpoint

Since its foundation, the Teral Group has constantly responded with advanced technologies and quality to the changing times and the needs of our customers.

As specialists in the water and air that are vital to a beautiful planet, we are committed to developing products that show concern for the movements to protect the environment.

A deeper and broader viewpoint. Our proven track record is evidence of the trust placed in the Teral brand, both in Japan and overseas.

## Triple e – the new product concept at Teral

The Top Runner Program aimed at energy-efficient electric motors was introduced in April 2015. At Teral, we are developing products that comply with the new regulation under the Triple e concept.

High **e**fficiency products realize

saving **e**nergy and preserving the Earth

**e**nvironment



## The Teral Group

- **TERAL INC.** ..... Manufactures and sells pumps, fans, units, environmental systems
- **TERAL TAKU INC.** ..... Manufactures small-scale pumps, built-in pumps
- **TERAL KURITA INC.** ..... Manufactures fans for industrial, equipment and agricultural use
- **TANIYAMA CO., LTD.** ..... Manufactures fans for industrial, construction and air-conditioning use
- **TERAL TECHNOSERVICE INC.** ... Maintenance & Engineering
- **Overseas** ..... Teral Asia Limited / Teral Thai Co., Ltd. /  
Teral General Machine (Shanghai) Co., Ltd. / Teral Middle East F.Z.C. /  
Teral Pumps & Fans North America Ltd. /  
Teral Vietnam Limited Liability Company /  
PT. Teral Indonesia Pumps and Fans / T&W / Teral Philippines Inc.



This is where we work!



Sirocco fan



Pressure fan



Sirocco fan



Volute pump



Pressurized water supply pump



Jet fan



Direct connection water supply booster pump



Cross-flow fan (Air curtains)



Filtration equipment



Volute pump



Roof ventilator



Cubicle type fire pump



Mild fan



Fire pump



Coolant pump



Coolant filtration equipment



# A complete lineup for a range of need in daily life and on the production floor

Air-conditioning, water supply and drainage are some of the indispensable facilities for a comfortable environment in apartment buildings and office buildings. Technical progress toward better efficiency and energy conservation is in constant demand at all types of production sites. The Teral Group understands the characteristics of different sites and pays close attention to product development. We are proud of our extensive lineup that responds to customer needs.

## For the construction market



Pressurized water supply pump



Direct connection water supply booster pump



Fire pump



Line pump



Volute pump



Vertical volute pump



Water supply pump for shallow wells



Water supply pump for shallow wells



Water supply pump for deep wells



Submersible drainage pump



Submersible drainage pump



Submersible turbine volute pump



Deep well pump



Deep well pump



Total heat exchanger



Sirocco fan



Line fan



Smoke ventilation fan



Kitchen garbage disposal system



Filtration equipment



Filtration equipment



Solar battery pump system



BT BioClean



Rooftop greening system

# For the industrial market



Volute pump



Coolant pump



Coolant pump



Mini turbo fan



Ring blower



Turbo fan



Pressure fan



Air curtains



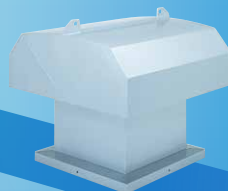
Jet fan



Big Log



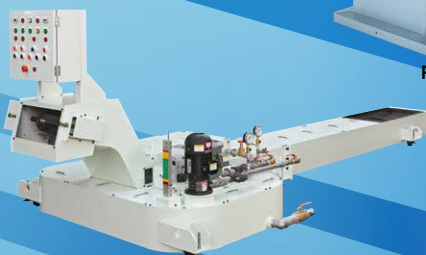
FRP turbo fan



Roof ventilator



Pressure fan



Coolant filtration equipment

## C O N T E N T S

The Teral Group provides products in 3 fields

### Pump.....6

#### ●Water supply pumps .....6

- Direct connection water supply booster pumps .....6
- Pressurized water supply pumps .....6
- For pumping water .....7
- For agricultural use .....7
- Water service booster pump .....7
- Pumps for environmental application and disaster prevention .....7

#### ●Household pumps .....8

- Above ground water supply pumps for shallow wells .....8
- Water supply pumps for shallow / deep wells .....8
- Submersible water supply pumps for deep wells .....8
- Water service booster .....8

#### ●Fire pumps .....9

- Conventional type fire pumps .....9
- For auxiliary pressurization .....9
- For aqueduct connection type sprinklers .....9

#### ●Water supply / circulation pumps .....10

##### Above-ground pumps

- Volute pumps .....10
- Line pumps .....11
- Self-priming volute pumps .....11
- Cascade pumps .....11

##### Submersible pumps

- Deep well submersible pumps .....12
- Submersible turbine pumps .....12
- Submersible axial flow pumps .....12
- Submersible mixed flow pumps .....12

#### ●Drainage pumps .....12

- Submersible drainage pumps .....12
- Relay tank pump unit .....12

#### ●Oil pumps .....13

- Gear pumps .....13
- Self-priming cascade pump .....13

#### ●Coolant pumps .....13

- Immersion type coolant pumps .....13
- Floor type coolant pumps .....13

### Fan.....14

#### ●Air-conditioning fans .....14

- Sirocco fans (Multi-blade fan) .....14
- Mini Sirocco fans (Multi-blade fan) .....14
- Line Sirocco fans (Multi-blade fan) .....14
- Line Sirocco fans (Mixed flow fan) .....15

#### ●Smoke ventilation fans .....15

- Smoke ventilation fans .....15

#### ●Industrial fans .....16

- Mild fans (backward curved blade fan) .....16
- Mini turbo fan (backward curved blade fan) .....16
- Turbo fans (backward curved blade fan) .....16
- Turbo blower .....16
- Plate fan .....16
- Ring blowers .....17
- Axial flow fans .....17
- Resin fans .....18

#### ●Commercial fans .....18

- Pressure fans .....18
- Roof ventilators .....19
- Cross-flow fans (Air curtains) .....19
- Jet fans .....19

### Environmental Systems .....20

#### ●Water treatment systems .....20

- Filtration equipment .....20
- Iron and Manganese removal device .....20
- Chemical dosing equipment .....20

#### ●Coolant filtration equipment .....21

#### ●Total heat exchanger .....21

#### ●Kitchen garbage disposal systems .....22

- Disposers .....22

#### ●Reuse of waster water systems .....23

#### ●Pretreatment system for kitchen waste water .....23

#### ●Solar battery pump system .....23

#### ●Rooftop greening system .....23



# Pump Line up

Although we may not notice them, pumps support our every day lives. Leading-edge technology and uncompromising product quality control provide answers to today's changing needs.

## Water supply pumps

Powerful, yet designed to save space and energy.

High-performance pumps with excellent durability and workmanship support safety in daily life.

### Direct connection water supply booster pumps



Cabinet type  
**MC5S**



Cabinet type  
**MC5S-P**



Cabinet type  
**MC5S-W3**



Cabinet type  
**MC5S-B**



Stationary type  
**NX-DFC**

### Pressurized water supply pumps



Estimated terminal pressure  
constant control  
**CXV**



Estimated terminal pressure  
constant control  
**NX-VFC**



Estimated terminal pressure  
constant control  
**NX-VFC** Multiple pump control

## Pressurized water supply pumps



Estimated terminal pressure  
constant control,  
high head  
**SVMV**



Estimated terminal pressure  
constant control,  
submersible pump  
**TUV**



Constant pressure  
control  
**NX-LAT**



Estimated terminal pressure  
constant control,  
receiving tank integrated  
**R-NXVFC**  
**RT-NXVFC**  
Constant pressure control,  
receiving tank integrated  
**R-NXLAT**  
**RT-NXLAT**

### For pumping water



**NX-LFT**

### For agricultural use



With self-priming pump,  
39L pressure tank  
**LAT3-MTP**

### Water service booster pump



Submersible type  
**BST**

## Pumps for environmental application and disaster prevention



Manual water  
well pump  
**ELEP**



DC power water supply pump  
**PT**



Rainwater collection system  
underground tank unit  
**RUTG-THP6**  
Rainwater collection system  
above-ground outdoor use  
**RUT-THP6**

## Household pumps

From shallow well pumps to deep well pumps, including inverter control and constant water supply type, we have a varied lineup to meet your needs.

### Above ground water supply pumps for shallow wells



Inverter control  
**THP6-V**  
Constant pressure water supply  
**THP6**



Constant pressure water  
supply tank system  
**WP**

### Water supply pumps for shallow / deep wells



Constant pressure water  
supply tank system  
**KP**

### Submersible water supply pumps for deep wells



Inverter control  
**TWS-V**



Constant pressure  
water supply  
**TWS**



### Water service booster



Water circulation auxiliary  
pressure type  
pressure cistern  
**ST**



Hot water supply pressure type  
**PH-204GT1**



Inverter control  
**RMB-THP6-V**  
Constant pressure water supply  
**RMB-THP6**



## Fire pumps

Teral has achieved the first unitization in the industry and blazed the rail in unitized fire pumps. Fire pumps created from years of experience and technology support safety in daily life.

### Conventional type fire pumps



Motor driven type  
**NXF**



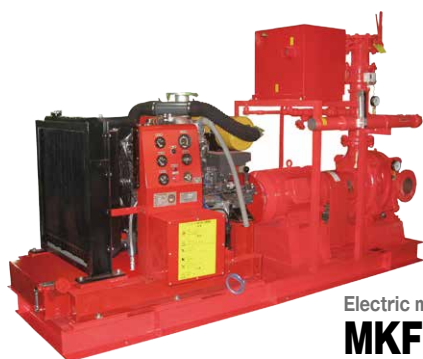
Motor driven type  
**MJF**



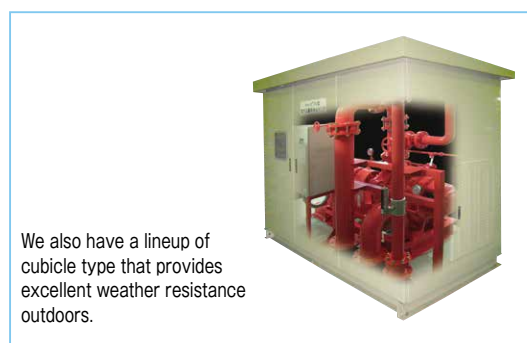
Motor driven type  
**MKF**



Motor driven type  
**SVGf**



Electric motor and engine driven  
**MKFD**



We also have a lineup of cubicle type that provides excellent weather resistance outdoors.

### For auxiliary pressurization

**JPF-SVM**



### For aqueduct connection type sprinklers

Aqueduct connection type  
in specified facility  
**NXFT**



## Water supply / circulation pumps

High performance and reduced size and weight have been realized through the latest fluid design.  
Our stainless steel lineup has been improved to meet a wide range of needs.

### Above-ground pumps

#### ● Volute pumps



2-pole, motor type

**SJM2/SJM3**

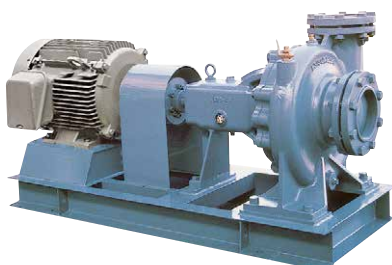


2-pole,  
direct-coupled

**SJ**

4-pole, direct-coupled

**SJ4**

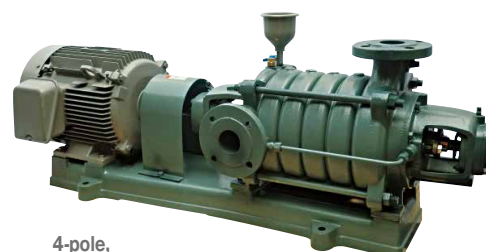


2-pole,  
direct-coupled

**LS2**

4-pole,  
direct-coupled

**LS**



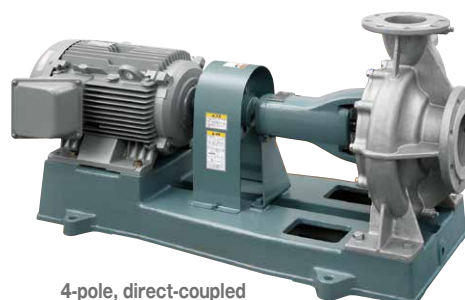
4-pole,  
Multistage direct-coupled

**M**



2-pole, motor type

**SJMS**



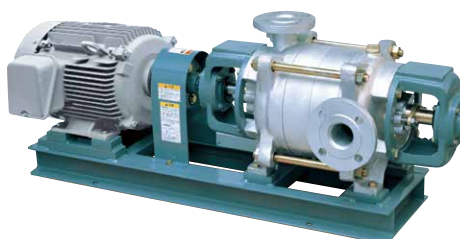
4-pole, direct-coupled

**SJ4S**



2-pole, multistage motor type

**NX**



2-pole,  
multistage direct-coupled

**MKHS**



2-pole, direct-coupled

**SVM**



## Above-ground pumps

### • Line pumps



2-pole, motor type  
**LP**



4-pole, direct-coupled  
**LPE**

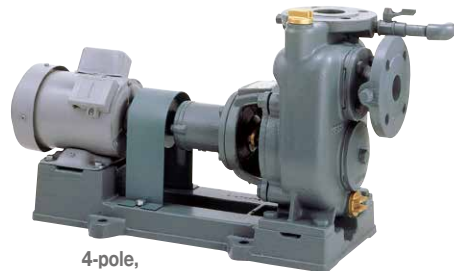


2-pole, motor type  
**SLP2**

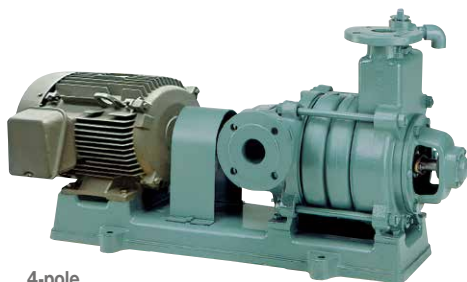
### • Self-priming volute pumps



2-pole, motor type  
**MTP**



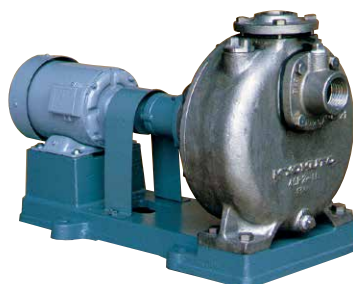
4-pole,  
direct-coupled  
**SP3/SP**



4-pole,  
multistage direct-coupled  
**MSP**



Cast iron, 2-pole, motor type  
**ESPM**



Stainless steel (gas contact part),  
4-pole, direct-coupled  
**SP\_SUS**

## Submersible pumps

- Deep well submersible pumps



**MSUS**

**MSU**

- Submersible turbine pumps



**SSTM series**

**STM series**

- Submersible axial flow pumps



**SAM series**

- Submersible mixed flow pumps

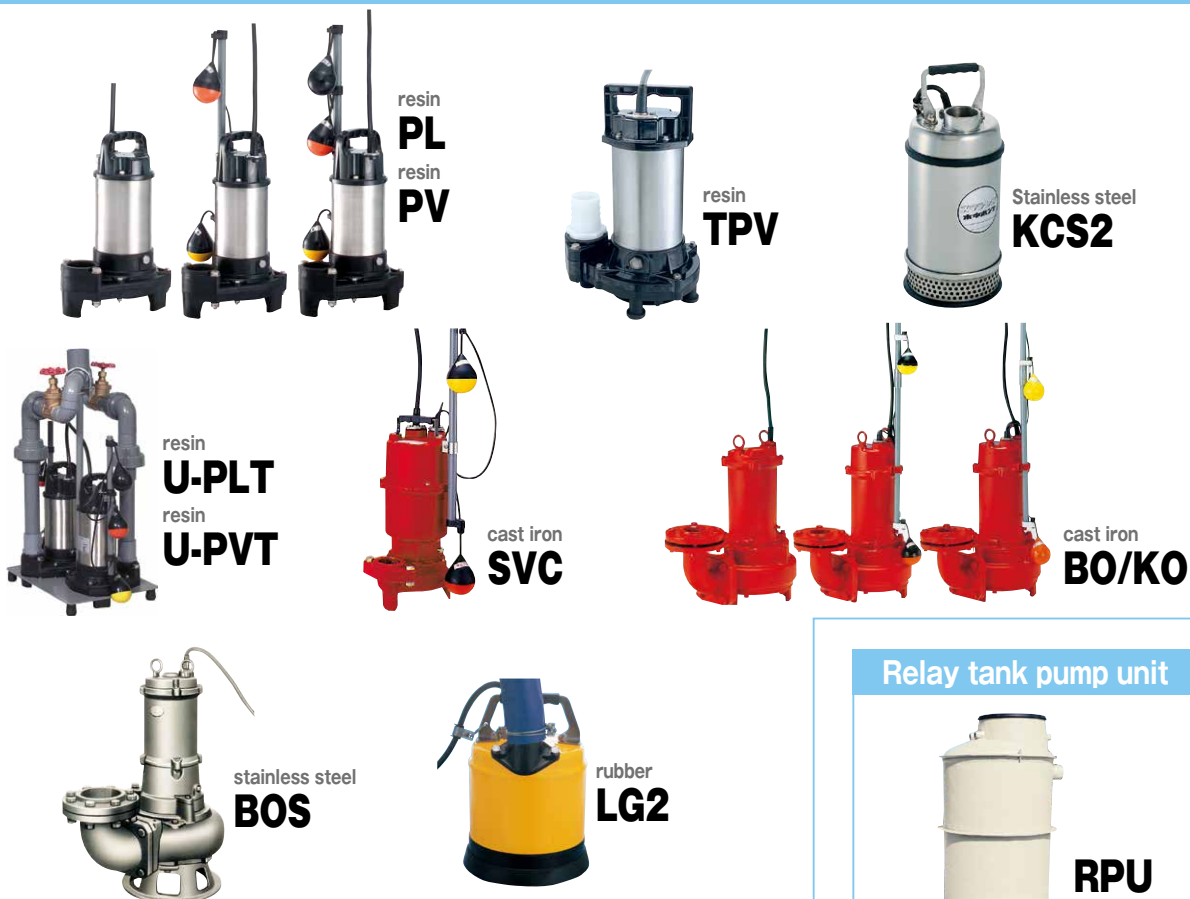


**SPM series**

## Drainage pumps

Our broad product lineup responds to a range of need from household use to heavy industry.

### Submersible drainage pumps



resin  
**PL**  
resin  
**PV**

resin  
**TPV**

Stainless steel  
**KCS2**

resin  
**U-PLT**  
resin  
**U-PVT**

cast iron  
**SVC**

cast iron  
**BO/KO**

stainless steel  
**BOS**

rubber  
**LG2**

### Relay tank pump unit

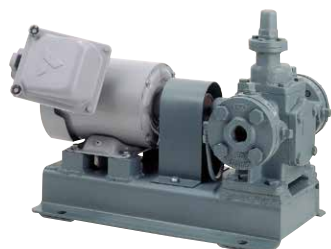
**RPU**



## Oil pumps

We have a varied oil pumps of gear type, cascade type, internal gear type to meet your needs.

### Gear pumps

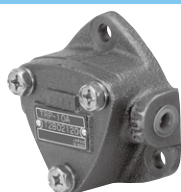


low head  
**GPL2**  
high head  
**GPM2**

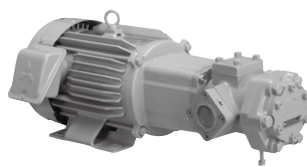


**GV**

### Internal gear pumps



Pump only  
**TRP**



Direct driven  
**TRP-M**



## Coolant pumps

From small to large volume, low to high head, and clean to dirty liquid, Teral provides quality solutions for your needs with a varied lineup.

### Immersion type coolant pumps



Non-seal, single-stage  
close coupled type  
**VKP**



Non-seal, multistage  
close coupled type  
**LHW**



Non-seal, single-stage  
close coupled type  
**LFO**



Non-seal, multistage  
close coupled type  
**LBK**



Non-seal, multistage  
close coupled type /  
direct coupled type  
**LPWE**



Non-seal, multistage  
close coupled type  
**LVS**



Mechanical seal, multistage  
close coupled type,  
for coolant tank cleaning  
**SKM**

### Floor type coolant pumps



Non-seal, single-stage  
close coupled type  
**VKN**



Non-seal, multistage  
close coupled type / direct coupled type  
**LPSE**

# Fan Line up

Fans have come to play an indispensable role in today's ever more complex urban environments. Our varied line-up of high safety products help to maintain comfortable environments in a number of ways.

## Air-conditioning fans

We have a varied lineup from centrifugal fan for low & high pressure, axial fan that can be installed between ducts, and engine drive to respond to a range of need.

### Sirocco fans (Multi-blade fan)



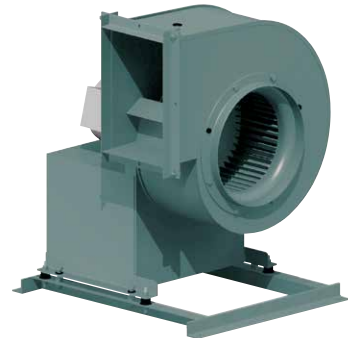
Single inlet belt driven  
straddle mounted impeller type

**CLF5-RS**  
**CLF6-RS**



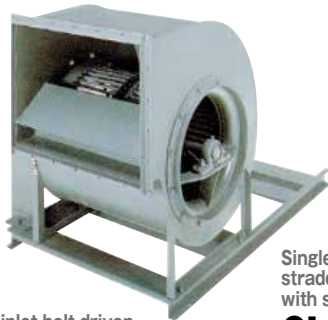
Single inlet belt driven overhang type

**CLF2-OB**  
**CLF6-OB**



Single inlet direct driven type  
without coupling

**CLF6-HOH**



Double inlet belt driven  
straddle mounted impeller type

**CLF2-RD**



Single inlet belt driven  
straddle mounted impeller type  
with silencer box

**CLF6-U-RS**  
**CLF5-U-RS**



Double inlet belt driven straddle  
mounted impeller type with  
silencer box

**CLF2-U-RD**

### Mini Sirocco fans (Multi-blade fan)



Single inlet direct driven type  
without coupling

**BR**



Twin fan  
**DR**

### Line Sirocco fans (Multi-blade fan)



Double inlet direct driven type  
without coupling

**LCF2**

Double inlet direct driven type  
without coupling with silencer

**LCF2-U**



## Line Sirocco fans (Mixed flow fan)



Direct driven type  
without coupling  
**ALF2/ALF**



Direct driven type  
without coupling  
**ALF-2E**



Belt driven type  
**ALF-2P**



Direct driven type without  
coupling, with silencer box  
**ALF2-U/ALF-U2**

## Smoke ventilation fans

We have a varied lineup from centrifugal fan for low & high pressure, axial fan that can be installed between ducts, and engine drive to respond to a range of need.

### Smoke ventilation fans



Sirocco fan (multi-blade fan) motor driven  
single inlet belt driven  
straddle mounted impeller type  
**CLF2(R)-RS**



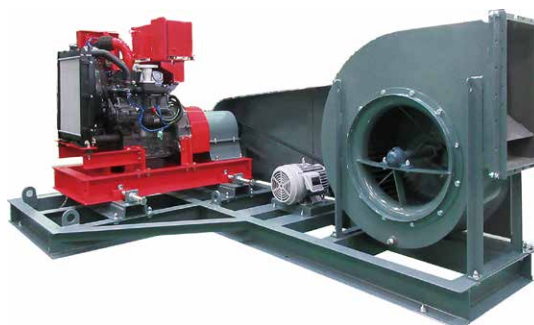
Mild fan (backward curved multi-blade fan)  
motor driven, single inlet belt driven  
overhang type  
**CMF3(R)-SOB**



Mild fan (backward curved multi-blade fan)  
motor driven, single inlet belt driven  
straddle mounted impeller type  
**ETF(R)-RS**



Axial flow fans  
motor driven  
direct driven type without coupling  
**AES4(R)**



Sirocco fan (multi-blade fan) engine &  
motor driven, single inlet belt driven  
straddle mounted impeller type  
**CLF2(R)-RS-Y**

## Industrial fans

We have assembled a varied lineup to respond to the need for optimization, energy efficiency, cleanliness and low noise levels at industrial sites.

### Mild fans (backward curved blade fan)



Single inlet belt driven  
straddle mounted impeller type  
**CMF3-RS**



Single inlet belt driven  
overhang type  
**CMF3-SOB**



Single inlet belt driven  
overhang type  
**CMF3-OB**



Single inlet direct driven type  
without coupling  
**CMF3-HOH**



Single inlet belt driven  
straddle mounted impeller type  
Single inlet belt driven  
overhang type  
Double inlet belt driven  
straddle mounted impeller type  
Single inlet direct driven type  
without coupling  
**LAF**



Single inlet belt driven  
straddle mounted impeller type  
Single inlet belt driven  
overhang type  
Double inlet belt driven  
straddle mounted impeller type  
**HLAF**

### Mini turbo fan (backward curved blade fan)



Single inlet direct driven  
type without coupling  
**KT**

### Turbo fans (backward curved blade fan)

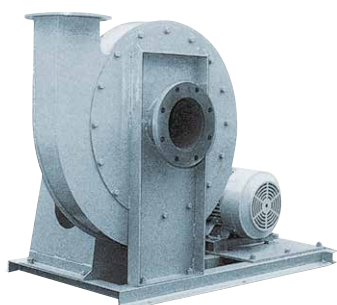


Single inlet belt driven  
overhang type  
**CTF2-OB**  
**CTF3-OB**

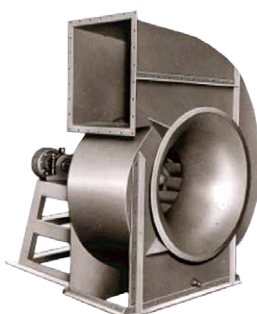


Single inlet direct driven with  
coupling, overhang type  
**CTF2-MOB**  
**CTF3-MOB**

### Turbo blower

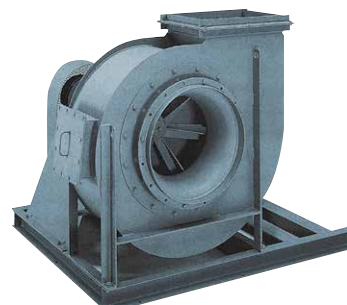


Single inlet belt  
driven overhang type  
**CTB-OB**



Single inlet belt driven  
overhang type  
**HAF**

### Plate fan



Single inlet belt  
driven overhang type  
**CPF2-OB**



## Ring blowers



Single phase  
low noise type  
**VFZ-PN**



Standard model  
**VFZ-A**



Low noise type  
**VFZ-AN**



UL/CSA certified  
**VFC-UL**

## Axial flow fans

Belt driven type  
round

**APK5**



Direct driven type

**AES2**



Direct driven type, square  
aluminum impeller

**AF**

Equipped with an explosion-  
proof type motor

**EAF**

Equipped with increased safety  
explosion-proof type motor

**IEAF**



Direct driven type  
square, steel impeller

**AF**



Direct driven type  
square, all stainless steel

**AFSS**



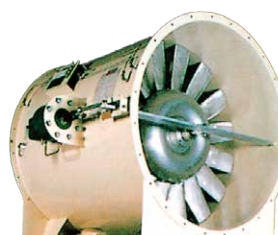
Tunnel ventilation fans Big log

**Big log**



Direct driven type  
Belt driven type  
round

**TAF**



Automatic variable  
wing type

**CP**

## Resin fans



FRP sirocco fan  
single inlet belt driven  
overhang type

**KLF-OB**



FRP turbo fan  
single inlet belt driven  
overhang type

**KTF-OB**



PVC axial flow fan  
direct driven without  
coupling

**AEP**

## Commercial fans

Providing pressure fans, roof ventilators, air curtains, agricultural and livestock ventilation fans, and induction fans, you can find the right fan for various site among the broad selection of Teral fans.

### Pressure fans

Standard  
type  
**PF**



Outdoor  
type  
**WP**



Equipped with an  
explosion-proof  
type motor  
**EPP**



All stainless  
steel  
**WPS**



Frameless  
type  
**TP**



With contact  
switch  
**S**



#### Options

Mounting Frames



Fixed Louvers



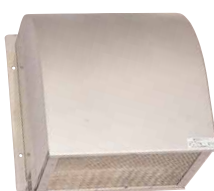
Wind Pressure Shutters



Guard Nets



Outdoor Hoods, Fireproof Hoods, Intake Outdoor Hoods (with rainwater gutter)



Filter Unit



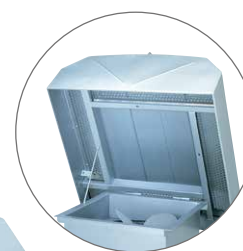
## Roof ventilators

Standard exhaust type

**ARVS**

Standard intake type

**ARVS-A**



◀Option:  
Blocks for foreign substance  
with bird screen  
with insect screen

Standard exhaust type

**RV**

Standard intake type

**RV-A**

## Cross-flow fans (Air curtains)

Standard type

**TF(-H)**



Stainless steel

**TFS(-H)**



## Jet fans



Standard type

**SF**



Built-in explosion-proof  
motor

**SFX**



With three-way  
nozzle

**SF-t**



# Environmental Systems

Purification and recycle of waste water is now one of the most priority issued of the urban life. We hope to promote a sustainable recycling society by taking a total approach to preserving the future of the environment.

## Water treatment systems

Providing filtration equipment and chemical liquid injection device for various applications such as baths, pools, landscapes, well water, and rainwater, we will respond to individual needs by custom design.

### Filtration equipment



Sand filtration  
**BSF**



Sand filtration  
**MSF3**



Sand filtration  
**TDT2**



Cartridge filtration  
**PFF**



Hair catcher  
Strainer type  
**HC**

### Iron and Manganese removal device



**TDTM**

### Chemical dosing equipment



**PTS**

## Coolant filtration equipment

Providing a lineup of coolant filtration equipment for cutting and grinding applications, we will respond to individual needs by custom design.

### For cutting

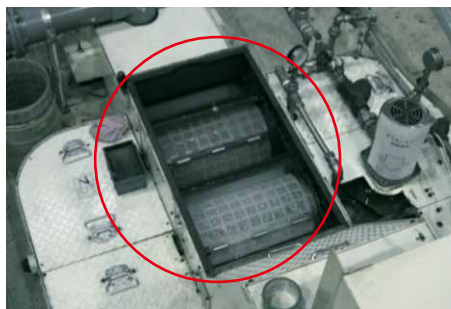
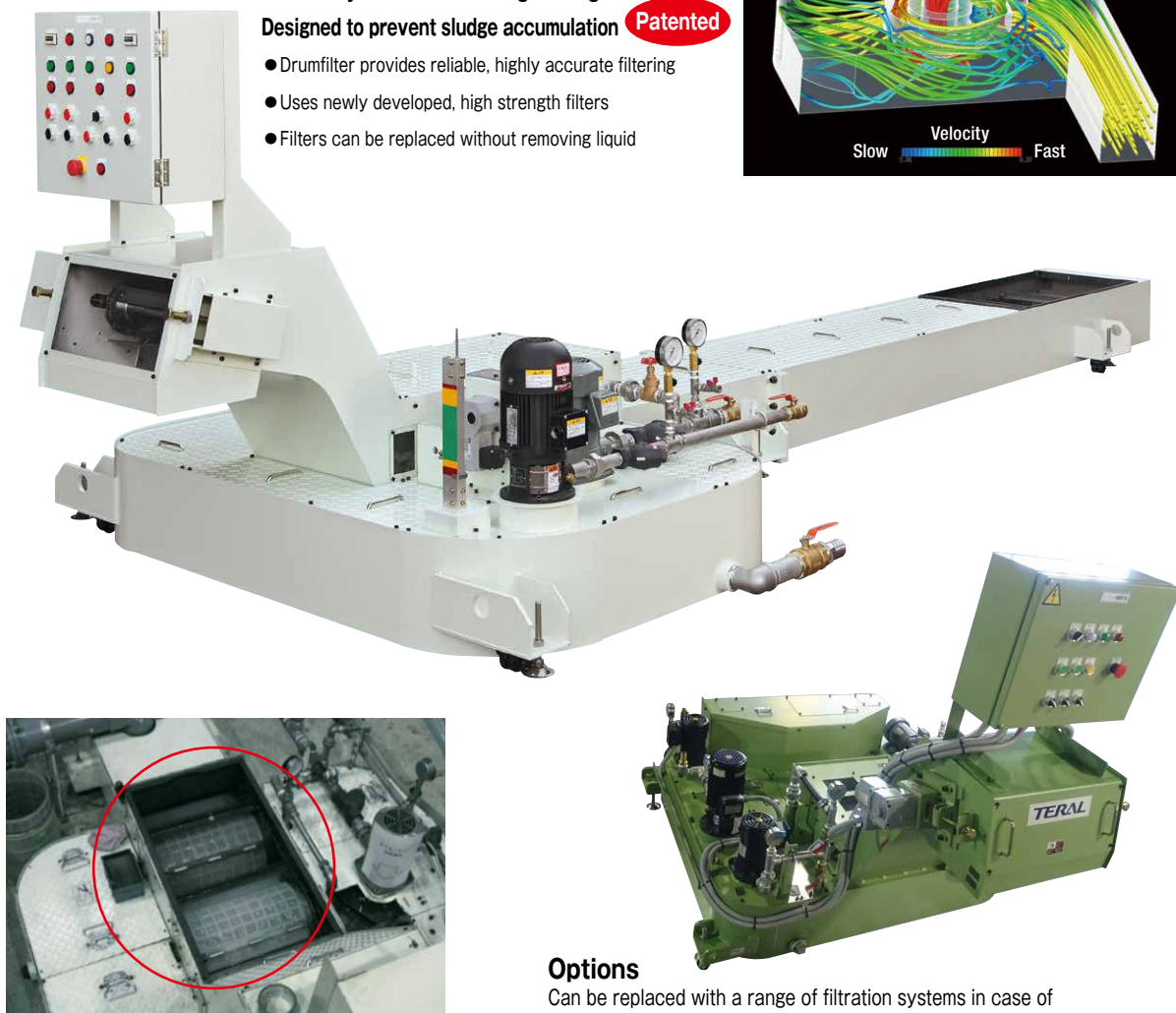
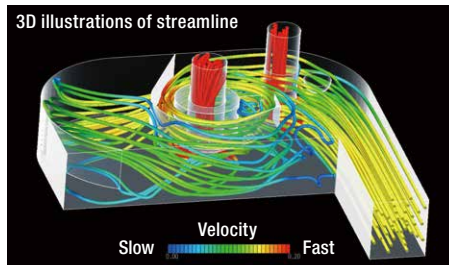
#### Drum filter type **CyClean® TDF/TDFN**

Efficient system for recovering floating oil

Designed to prevent sludge accumulation **Patented**

- Drumfilter provides reliable, highly accurate filtering
- Uses newly developed, high strength filters
- Filters can be replaced without removing liquid

3D illustrations of streamline



Drum filter is easily replaced.

#### Options

Can be replaced with a range of filtration systems in case of need for even more precise filtration.

## Total heat exchanger

Total heat exchanger is a way to reduce the ventilation load. We offer a wide range of products from small to large air volumes to respond to individual needs by custom design.

### Floor embedded type

**EU**



## Kitchen garbage disposal systems

Raw garbage disposal systems reduce garbage into a powder using a disposer, purity it in a treatment tank and discharge it into the sewer system. Today such systems have attracted attention for their ability to eliminate the odors and hassle of treating raw garbage while helping to conserve the environment.

### Disposers

As raw garbage can be simply placed in the disposal system and crushed with the disposer at the push of a button, it greatly reduces the burden of garbage accumulation and collection. These systems have quickly achieved widespread adoption in places such as stylish high-rise apartment buildings and commercial applications requiring hygiene control.



New disposer employing the industry's first jet flush system

Garbage collection points can be kept small, preventing crows, stray cats or other animals from being attracted to the site.

The amount of garbage that has to be taken out is cut in half, greatly helping housewives and the elderly.

Eliminating the smell of kitchen garbage and leaks from garbage bags helps keep the elevators and stairs clean.



Released into public sewer mains or high-level domestic wastewater treatment tank

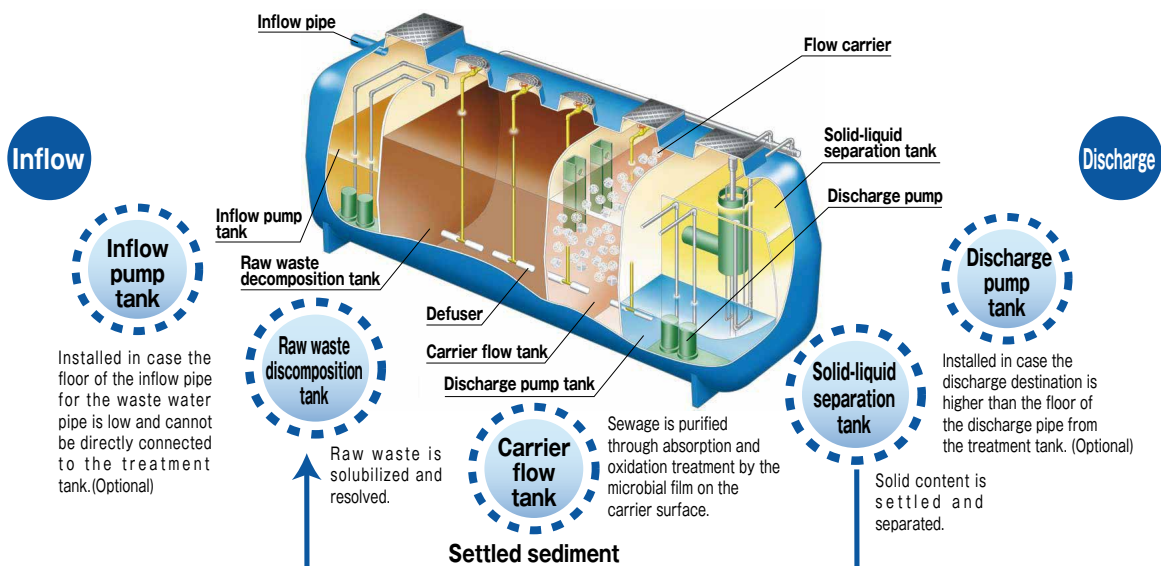
Exhaust pipe/Exhaust fan

Disposer

Waste water pipe

Machine room

Waste water treatment tank





## Reuse of waste water systems

Substitute clean water is produced by purifying the organic materials present in waste water using microorganisms, and reusing the water after filtration and sterilization. Wastewater reuse systems utilize this water as an intermediate water supply for applications such as toilets and fire fighting. Today the conservation of recycling-oriented water resources has attracted considerable attention from various quarters.



## Pretreatment system for kitchen waste water

### BT BioClean

This system purifies wastewater from kitchens, which contain highly concentrated organic pollutants and oils, to bring it up to the standards required for release into the public waste mains. Instead of the existing pressurized flotation separation system by using our unique organic treatment method called BT BioClean, a separate treatment process for sludge and scum is no longer required. This system has won greatest praise from our customers.



## Solar battery pump system

**This environmentally-friendly pump system runs on solar energy**

- ① Clean energy production as light converted directly into electrical energy
- ② Uses renewable solar energy
- ③ No external power source required. Can be installed in any location.
- ④ Environmentally friendly, zero emissions of greenhouse gas (CO<sub>2</sub>)
- ⑤ Using submersible pumps results in extremely low running noise



## Rooftop greening system

Rooftop greening systems have drawn attention as a possible solution to the heat island effect of major cities. By combining bamboo charcoal with a rainwater collection and circulation system unique designs can be created without sacrificing ease of maintenance.



Before



After





### **TERAL INC.**

Head Office 230, Moriwake, Miyuki-cyo, Fukuyama-city, Hiroshima, 720-0003, Japan  
Tel.+81-84-955-1111 Fax.+81-84-955-5777  
[www.teral.net](http://www.teral.net)

### **Teral Asia Limited**

Room 1001,10/F, Olympia Plaza, 255 King's Road, North Point, Hong Kong  
Tel.+852-2571-0935 Fax.+852-2571-0619

### **TERAL THAI CO.,LTD.**

150 Moo 16 Udomsorayuth Rd., T.Bangkrasan, A.Bangpa-In, Ayutthaya 13160 Thailand  
Tel.+66-3535-2148-9 Fax.+66-3535-2150

### **TERAL TRADING & SERVICE CO.,LTD.**

150 Moo 16 Udomsorayuth Rd., T.Bangkrasan, A.Bangpa-In, Ayutthaya 13160 Thailand  
Tel.+66-3535-2145-7 Fax.+66-3535-8549

### **PT.Teral Indonesia Pumps and Fans**

Sinpasa Commercial Blok SB No 001  
Jl. Boulevar Selatan Summarecon Bekasi  
RT.003/RW.005, Kel. Marga Mulya, Kec. Bekasi Utara, Kota Bekasi, Jawa Barat 17142  
TEL.+62-21-8949-4116

### **Teral Vietnam Limited Liability Company**

9th Floor, LADECO Building, No. 266 Doi Can Street, Lieu Giai Ward, Ba Dinh District, Hanoi City, Vietnam  
Tel.+84-24-393-52-790 Fax.+84-24-393-52-289

### **Teral General Machine (Shanghai) Co.,Ltd.**

No.285, Yuan Qu Road(N), Bei Qiao, Min Hang District, Shanghai 201109, China  
Tel.+86-21-6490-9128 Fax.+86-21-6490-9126

### **Teral Middle East F.Z.C.**

1806-002, 18th floor, BB1, Mazaya Business Avenue, JLT, Dubai, UAE. PO Box 414781  
Tel.+971-4369 9039

### **Teral Pumps & Fans North America Ltd.**

Suite # 197, 800-15355 24 Ave Surrey, B.C., CANADA V4A 2H9  
Tel.+1-604-839-1008

### **Teral Philippines Inc.**

Roof Deck 3, Vernida 1 Building, 120 Amorsolo St., Legaspi Village, Makati City  
Tel.+63 2 7717-9314

Please note that product specifications are subject to change for improvement without prior notice.